

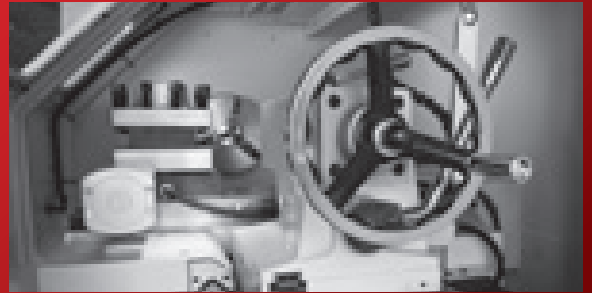
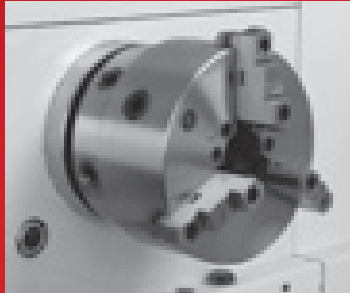


TURNING

Precision manufactured to meet the demands of even the highest volume shop, JET's extensive selection of turning machines enable experts to choose the lathes they need for any turning operation. JET turning machines come equipped with the taper attachments, collet closers, digital readouts and accessories the pros need to turn precision parts. Every JET machine is backed by an industry-leading Two Year Warranty. Premier customer support and professional manuals ensure optimal functioning and operation.



PRECISION MANUFACTURED TO MEET YOUR DEMANDS



CONTENTS

CNC LATHE	36-37
LARGE SPINDLE BORE LATHES	38-43
GEARED HEAD ENGINE LATHES	44-51
BELT DRIVE LATHES	52-53
ACCESSORIES	54-57
DIGITAL READOUTS	58-59
TURNING HELPFUL INFO	60-61

CL-1640ZX CNC LATHE WITH ANILAM 4200T CONTROL

The Jet ZX CNC lathe takes the best features of our top line manual lathes and adapts the Anilam 4200T CNC system to control the various turning actions. The CNC control is designed for ease of use and intuitive interaction, which means no prior programming experience is needed. A shape Editor allows drawing a part graphically and creating the tool path without programming. A Tool Page provides graphical description of 99 tools, so the operator can specify tool radius, length and wear offsets, etc.



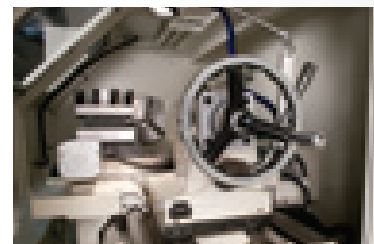
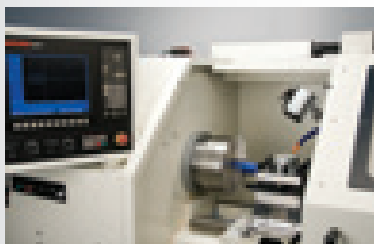
FEATURES

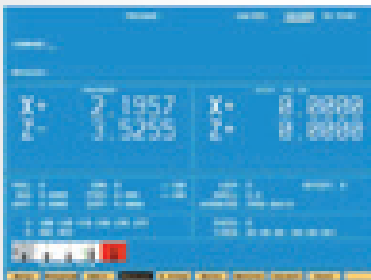
- Anilam 4200T with 12.1 TFT Flat Screen CNC Control
- Dual electronic handwheels for manual control
- Hardened and precision ground bed ways
- High alloy gears hardened, ground and honed
- 3-Bearing spindle support
- Automatic homing
- Easy access chip removal
- 4 Station Programmable Turret
- Automatic lubrication system
- Coolant system with 5.5 gallon coolant tank
- Teach In Mode
- 255 Pairs of Tool Offsets
- Rigid Tapping is Standard
- Turcite B on carriage sliding surfaces

STANDARD EQUIPMENT

- Tool box and tools
- Fully enclosed Cabinet
- 10" 3-jaw chuck
- 16" Face plate
- Steady Rest
- Work light

STOCK NUMBER	320930
Model Number	CL-1640ZX-CNC
Swing over Bed (in.)	16
Swing Through Gap (in.)	25-7/8
Distance Between Centers (in.)	40
Spindle Bore (in.)	3-1/8
Spindle Mount	D1-8
Spindle Taper (w/ Sleeve)	MT-7 (MT-5)
Range of Spindle Speeds (RPM)	80 - 2000
Rapid Feed, X-Axis (in./min.)	394
Rapid Feed, Y-Axis (in./min.)	315
Max Tool Size (in.)	1 x 1
Cross Slide Travel (in.)	9
Carriage Travel (in.)	35
Tailstock Spindle Travel (in.)	6
Taper in Tailstock Spindle	MT-4
Steady Rest Capacity (in.)	3/8 to 7
Width of Bed (in.)	13-1/4
Motor	10HP, 230V, 3Ph
Net Weight (lbs.)	5,680





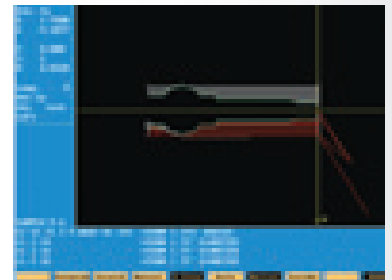
MANUAL MODE:

This lathe operates in manual mode as easily as a conventional lathe; run the axes with up to two hand-wheels. The 4200T is equipped with a number of features and provides the user with a wealth of critical data to ensure superior operation and results.



SEMI-AUTOMATIC MODE:

Operation in dual hand-wheel mode allows the machinist to cut in perfect arcs, tapers and chamfers. As only one hand-wheel is cranked, the 4200T controls both axes to produce the desired shape with exact precision.



AUTOMATIC MODE:

During automatic operation, the 4200T controls everything from start to finish. The machinist uses several options to generate the program using some very powerful programming tools available to them.

26" LARGE SPINDLE BORE LATHES

The perfect lathe for production use, these new Jet ZH lathes include the best features of our top line manual lathes with many new features and benefits. The GH-2680ZH is a rugged, one piece cast iron base that allows heavy cuts without any flexing. Backed by an industry-leading Two Year Warranty.



FEATURES

- Large 4-1/8" Spindle Bore
- Clutch operated headstock with all headstock gears hardened and ground
- Rapid power traverse on cross slide and carriage
- Headstock-gearbox designed for quick setup of thread turning operation without changing gears.
- Bed ways are induction hardened and ground for durability
- Heavy-duty tailstock and quill
- One piece heavy-duty cast iron base and bed for GH-2680ZH

STANDARD EQUIPMENT

- Drive Plate
- 12" 3-jaw direct mount scroll chuck with top reversing jaws
- 16" 4-jaw chuck
- Face Plate
- 2 Steady Rests
- Follow Rest
- 4 Way tool post
- Micro-carriage bed stop
- Coolant System
- Full length splash guard for GH-2680ZH, moveable splash guard for GH-26120ZH
- Halogen work lamp

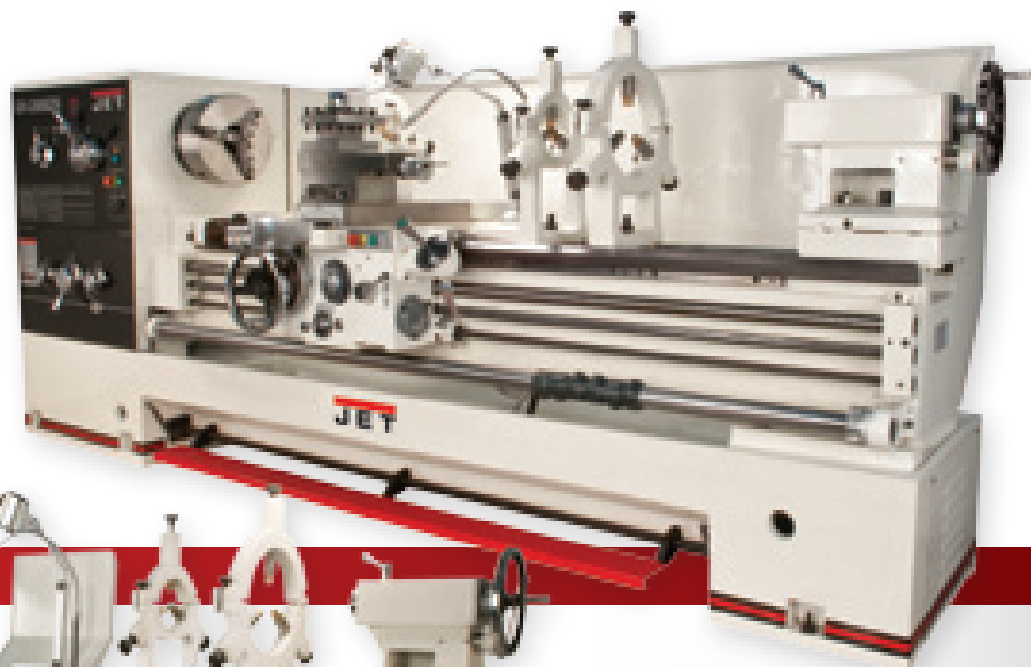
LARGE SPINDLE BORE LATHE AND ACCESSORY PACKAGES INSTALLED

26X80" Geared Head Engine Lathe with Newall DP700 DRO	321861
26X120" Geared Head Engine Lathe with Taper Attachment	321893
26X120" Geared Head Engine Lathe with Newall DP700 DRO	321891
26x120" Geared Head Engine Lathe with Newall DP700 DRO and Taper Attachment	321894

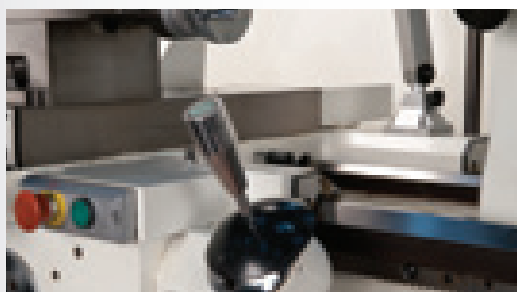
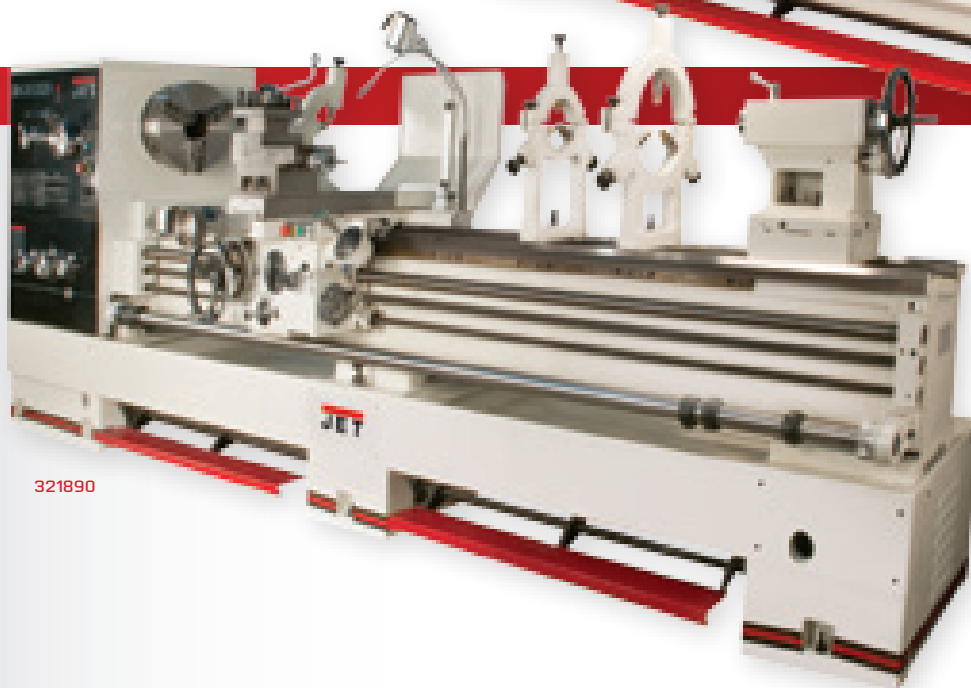
OPTIONAL EQUIPMENT	STOCK NUMBER
Taper Attachment	321293

STOCK NUMBER	321860	321890
Max. swing over bed (in.)	26	26
Max. swing over cross slide (in.)	16.5	16.5
Swing Through Gap (in.)	34	34
Length of Gap (in.)	8	8
Distance between Centers (in.)	80	120
Hole Through Spindle (in.)	4-1/8	4-1/8
Spindle Mount	D1-8	D1-8
Spindle Taper	MT-5	MT-5
Number of Spindle Speeds	12	12
Range of Spindle Speeds (RPM)	36-1,600	36-1,600
Number of Longitudinal Feeds (in.)	65	65
Range of Longitudinal Feeds (Inch/rev)	.0023-.0937	.0023-.0937
Number of Cross Feeds	63	63
Range of Cross Feeds (Inch/rev)	.0010-.0404	.0040-.0404
Number of Inch Threads	48	48
Range of Inch Threads	2-30	2-30
Number of Metric Threads	22	22
Range of Metric Threads (mm)	1-14	1-14
Number of D.P Threads	24	24
Range of D.P Threads	4-56 DPI	4-56 DPI
Number of Module Threads	18	18
Range of Module Threads (mm)	0.5-7	0.5-7
Max. Tool Size	1-1/4 x 1-1/4	1-1/4 x 1-1/4
Max. Compound Slide Travel (in.)	5-1/2	5-1/2
Max. Cross Slide Travel (in.)	12-3/32	12-3/32
Max. Carriage Travel (in.)	72-1/2	108-1/4
Tailstock Spindle Travel (in.)	6	6
Taper in Tailstock Spindle	MT-5	MT-5
Follow Rest Capacity	25/32 - 3-15/16	25/32 - 3-15/16
Steady Rest Capacity -Small	25/32 - 4-29/32	25/32 - 4-29/32
Steady Rest Capacity -Large	3-15/16 - 9-7/16	3-15/16 - 9-7/16
Width of Bed (in.)	16	16
Coolant Pump System	1/8HP	1/8HP
Main Motor	10HP, 230/460V, 3Ph	10HP, 230/460V, 3Ph
Prewired	230V	230V
Net Weight (lbs)	8514	9362
Overall Dimensions (LxWxH/Inch)	138 x 43 x 57	178 x 43 x 57

321860



321890



RAPID TRAVERSE:

The rapid power traverse on the cross slide and carriage is a great addition to these lathes that allows the user to access the work piece quickly. The joy stick design enhances overall ergonomics.



LARGE 4-1/8" SPINDLE BORE

ZX SERIES 14" - 22" LARGE SPINDLE BORE LATHES

A JET exclusive design, the ZX Large Spindle Bore Lathe Series provides power, precision, efficiency and reliability to your metal shop. A one piece cast iron base absorbs vibrations during operation to allow heavier cuts and ensure accuracy throughout, and the Universal Gearbox eliminates the need to change gears. A loaded standard equipment package makes the ZX lathes the model of production proficiency.

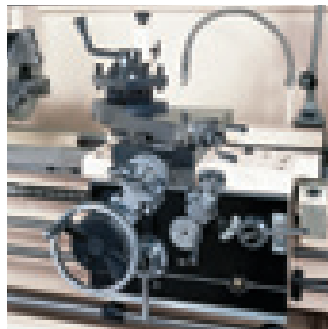


FEATURES

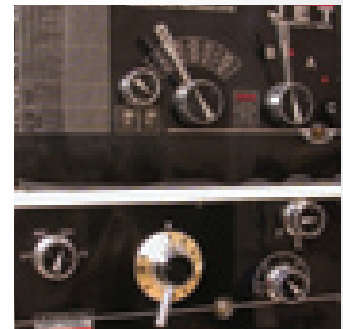
- 3-1/8" bore spindle is supported by two tapered and one ball bearing
- Universal gearbox allows inch, metric, diametral, and module pitch threads, no change gears required
- One-piece cast iron base absorbs vibration allowing heavier cuts
- High quality ANSI Class 50 wear-resistant cast iron bed ways are hardened and ground
- Front Removable Chip Tray
- Large easy to use foot brake
- Chrome molybdenum headstock gears are hardened, ground, and shaved
- Carriage features one-shot lubrication and Turcite B on bed sliding surfaces
- T-slotted compound slide featuring a four-way tool post
- Removable gap allows up to 25-7/8" diameter work on 16", 27-1/2" on 18"
- Five position automatic carriage stop increases productivity
- Attractive chrome control levers, dials, and knobs complete this impressive package

STANDARD EQUIPMENT

- 10" 3-jaw scroll chuck with top reversing jaws
- 12" 4-jaw independent chuck
- 12" face plate (16" models)
- 16" face plate (18" models)
- Four-way tool post
- Follow rest
- Large capacity steady rest
- Fully integrated coolant system
- Full length splash guard and coolant return
- Chuck Guard
- Articulating halogen work lamp
- Centrally located controls with jog button
- Threading dial
- Mounting pads and levelers
- Spindle sleeve (MT-7 to MT-5)
- Live center
- Tolerance test certificate
- Tool box and adjusting tools



CARRIAGE FEATURES ONE-SHOT LUBRICATION AND TURCITE B ON SLIDING SURFACES



ATTRACTIVE CHROME CONTROL LEVERS, DIALS AND KNOBS COMPLETE THIS PACKAGE



CLEAN, SIMPLE DESIGN AND WELL MARKED ELECTRICS MAKE MAINTENANCE ON THESE LATHES EASY!



LARGE 3-1/8" SPINDLE BORE



EVERY JET ZX LATHE COMES WITH A FOUR-WAY TOOL POST

OPTIONAL EQUIPMENT	STOCK NUMBER
5C Lever-Type Collet Closer	321292
Taper Attachment	321291



321910

STOCK NUMBER	321910	321920	321930	321940	321950	321960	321970	321980
Model Number	GH-1440ZX	GH-1460ZX	GH-1640ZX	GH-1660ZX	GH-1840ZX	GH-1860ZX	GH-1880ZX	GH-2280ZX
Swing over Bed (in.)	14	14	16	16	18	18	18	22
Swing over Cross Slide (in.)	7-5/8	7-5/8	10	10	11	11	11	13
Swing Through Gap (in.)	18	18	25-1/2	25-1/2	27-1/2	27-1/2	27-1/2	29-1/2
Length of Gap (in.)	12	12	12	12	12	12	12	12
Distance Between Centers (in.)	40	60	40	60	40	60	80	80
Spindle Bore (in.)	3-1/8	3-1/8	3-1/8	3-1/8	3-1/8	3-1/8	3-1/8	3-1/8
Spindle Mount	D1-8	D1-8	D1-8	D1-8	D1-8	D1-8	D1-8	D1-8
Spindle Taper (w/ Sleeve)	MT-7 (MT-5)	MT-7 (MT-5)	MT-7 (MT-5)	MT-7 (MT-5)	MT-7 (MT-5)	MT-7 (MT-5)	MT-7 (MT-5)	MT-7(MT-5)
Number of Spindle Speeds	12	12	12	12	12	12	12	12
Range of Spindle Speeds (RPM)	42 - 1,800	42 - 1,800	25 - 1,800	25 - 1,800	25 - 1,800	25 - 1,800	25 - 1,800	25 - 1,800
Number of Longitudinal and Cross Feed Rates	122	122	122	122	122	122	122	122
Range of Longitudinal Feeds (IPR)	.0015 - .0913	.0015 - .0913	.0015 - .0913	.0015 - .0913	.0015 - .0913	.0015 - .0913	.0015 - .0913	.0015 - .0913
Range of Cross Feeds (IPR)	.0006 - .0365	.0006 - .0365	.0006 - .0365	.0006 - .0365	.0006 - .0365	.0006 - .0365	.0006 - .0365	.0006 - .0365
Number of Inch Threads	61	61	61	61	61	61	61	61
Range of Inch Threads (TPI)	1-5/8 - 72	1-5/8 - 72	1-5/8 - 72	1-5/8 - 72	1-5/8 - 72	1-5/8 - 72	1-5/8 - 72	1-5/8 - 72
Number of Metric Threads	24	24	24	24	24	24	24	24
Range of Metric Threads	.05 - 20	.05 - 20	.05 - 20	.05 - 20	.05 - 20	.05 - 20	.05 - 20	.05 - 20
Max Tool Size (in.)	1 x 1	1 x 1	1 x 1	1 x 1	1 x 1	1 x 1	1 x 1	1 x 1
Compound Slide Travel (in.)	5-1/8	5-1/8	5-1/8	5-1/8	5-1/8	5-1/8	5-1/8	5-1/8
Cross Slide Travel (in.)	9	9	9	9	9	9	9	12
Carriage Travel (in.)	36-9/16	55-9/16	36-9/16	55-9/16	36-9/16	55-9/16	74-5/16	74-5/16
Tailstock Spindle Travel (in.)	5	5	5	5	5	5	5	5
Taper in Tailstock Spindle	MT-4	MT-4	MT-4	MT-4	MT-5	MT-5	MT-5	MT-5
Steady Rest Capacity (in.)	3/8 to 7	3/8 to 7	3/8 to 7	3/8 to 7	3/8 to 7-3/4	3/8 to 7-3/4	3/8 to 7-3/4	3/8 to 7-3/4
Follow Rest Capacity (in.)	1/2 - 3-1/2	1/2 - 3-1/2	1/2 - 3-1/2	1/2 - 3-1/2	1/2 - 3-1/2	1/2 - 3-1/2	1/2 - 3-1/2	1/2 - 3-1/2
Width of Bed (in.)	13-1/8	13-1/8	13-1/8	13-1/8	13-1/8	13-1/8	13-1/8	13-1/8
Overall Dimensions (in./ L x W x H)	96 x 44 x 66	116 x 44 x 66	96 x 44 x 66	115 x 44 x 66	96 x 44 x 66	115 x 44 x 66	136 x 44 x 66	136 x 45 x 71
Motor	7-1/2HP, 3Ph, 230V/460V Prewired 230V	7-1/2HP, 3Ph, 230/460V Prewired 230V	7-1/2HP, 230/460V, 3Ph, Prewired 230V	7-1/2HP, 230/460V, 3Ph, Prewired 230V	7-1/2HP, 230/460V, 3Ph, Prewired 230V	7-1/2HP, 230/460V, 3Ph, Prewired 230V	7-1/2HP, 230/460V, 3Ph, Prewired 230V	10HP, 230/460V, 3Ph, Prewired 230V
Net Weight (lbs.)	5,187	5,380	5,475	5,795	5,980	6,245	6,590	6,933

ZX SERIES 14" - 22" LARGE SPINDLE BORE LATHES PACKAGES

JET will customize your machine anyway you need it. We factory install DRO's, Collet Closer, Taper Attachments or any mixture to fit your shop's needs.

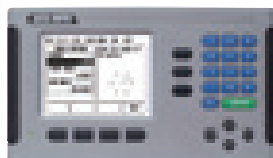
**CONTACT CUSTOMER SERVICE AT
888-804-7129 FOR ADDITIONAL
CUSTOMIZED PACKAGES**

GH-1440ZX LATHE AND ACCESSORY PACKAGES INSTALLED	
GH-1440ZX with Taper Attachment	321467
GH-1440ZX with Collet Closer	321531
GH-1440ZX with Acu-Rite 200S 2 Axis DRO	321469
GH-1440ZX with Acu-Rite 200S 2 Axis DRO & Taper Attachment	321507
GH-1440ZX with Acu-Rite 200S 2 Axis DRO & Collet Closer	321501
GH-1440ZX with Acu-Rite 200S 2 Axis DRO, Taper Attachment & Collet Closer	321569
GH-1440ZX with Acu-Rite 300S 2 Axis DRO	321301
GH-1440ZX with Acu-Rite 300S 2 Axis DRO & Taper Attachment	321303
GH-1440ZX with Acu-Rite 300S 2 Axis DRO & Collet Closer	321304
GH-1440ZX with Acu-Rite 300S 2 Axis DRO, Taper Attachment & Collet Closer	321302
GH-1440ZX with Newall DP700 2-Axis DRO	321470
GH-1440ZX with Newall DP700 2-Axis DRO & Taper Attachment	321570
GH-1440ZX with Newall DP700 2-Axis DRO & Collet Closer	321441
GH-1440ZX with Newall DP700 2-Axis DRO, Collet Closer & Taper Attachment	321498
GH-1460ZX LATHE AND ACCESSORY PACKAGES INSTALLED	
GH-1460ZX with Taper Attachment	321480
GH-1460ZX with Acu-Rite 200S 2 Axis DRO	321478
GH-1460ZX with Acu-Rite 200S 2 Axis DRO & Taper Attachment	321503
GH-1460ZX with Acu-Rite 200S 2 Axis DRO & Collet Closer	321490
GH-1460ZX with Acu-Rite 200S 2 Axis DRO, Taper Attachment & Collet Closer	321509
GH-1460ZX with Acu-Rite 300S 2 Axis DRO	321311
GH-1460ZX with Acu-Rite 300S 2 Axis DRO & Taper Attachment	321312
GH-1460ZX with Acu-Rite 300S 2 Axis DRO & Collet Closer	321315
GH-1460ZX with Acu-Rite 300S 2 Axis DRO, Taper Attachment & Collet Closer	321313
GH-1460ZX with Newall DP700 2-Axis DRO	321137
GH-1460ZX with Newall DP700 2-Axis DRO & Collet Closer	321585

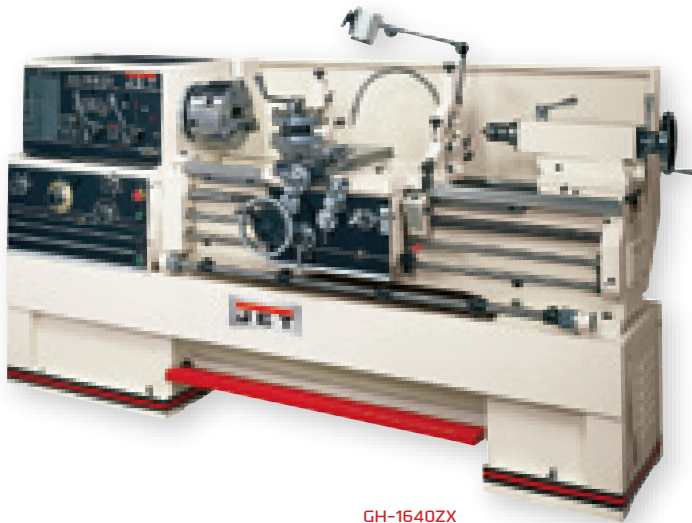
GH-1640ZX LATHE AND ACCESSORY PACKAGES INSTALLED	
GH-1640ZX with Taper Attachment	321474
GH-1640ZX with Collet Closer	321439
GH-1640ZX with Acu-Rite 200S 2 Axis DRO	321475
GH-1640ZX with Acu-Rite 200S 2 Axis DRO & Taper Attachment	321508
GH-1640ZX with Acu-Rite 200S 2 Axis DRO & Collet Closer	321495
GH-1640ZX with Acu-Rite 200S 3- Axis DRO	321525
GH-1640ZX with Acu-Rite 300S 2 Axis DRO	321381
GH-1640ZX with Acu-Rite 300S 2 Axis DRO & Taper Attachment	321382
GH-1640ZX with Acu-Rite 300S 2 Axis DRO & Collet Closer	321383
GH-1640ZX with Newall DP700 2-Axis DRO	321138
GH-1640ZX with Newall DP700 2-Axis DRO & Taper Attachment	321148
GH-1640ZX with Newall DP700 2-Axis DRO & Collet Closer	321494
GH-1640ZX with Newall DP700 2-Axis DRO, Collet Closer & Taper Attachment	321147
GH-1660ZX LATHE AND ACCESSORY PACKAGES INSTALLED	
GH-1660ZX with Taper Attachment	321477
GH-1660ZX with Collet Closer	321573
GH-1660ZX with Taper Attachment & Collet Closer	321544
GH-1660ZX with Acu-Rite 200S 2 Axis DRO	321455
GH-1660ZX with Acu-Rite 200S 2 Axis DRO & Taper Attachment	321543
GH-1660ZX with Acu-Rite 200S 2 Axis DRO & Collet Closer	321440
GH-1660ZX with Acu-Rite 200S 2 Axis DRO, Taper Attachment & Collet Closer	321576
GH-1660ZX with Acu-Rite 200S 3- Axis DRO	321530
GH-1660ZX with Acu-Rite 300S 2 Axis DRO	321388
GH-1660ZX with Acu-Rite 300S 2 Axis DRO & Taper Attachment	321389
GH-1660ZX with Acu-Rite 300S 2 Axis DRO & Collet Closer	321390
GH-1660ZX with Acu-Rite 300S 2 Axis DRO, Taper Attachment & Collet Closer	321391
GH-1660ZX with Newall DP700 2-Axis DRO	321139
GH-1660ZX with Newall DP700 2-Axis DRO & Taper Attachment	321529
GH-1660ZX with Newall DP700 2-Axis DRO & Collet Closer	321527
GH-1660ZX with Newall DP700 2-Axis DRO, Collet Closer & Taper Attachment	321502



NEWALL DP700 - DRO



ACU-RITE 200S - DRO



GH-1640ZX



GH-1440ZX

GH-1840ZX LATHE AND ACCESSORY PACKAGES INSTALLED	
GH-1840ZX with Taper Attachment	321466
GH-1840ZX with Acu-Rite 200S 2 Axis DRO	321481
GH-1840ZX with Acu-Rite 200S 2 Axis DRO & Taper Attachment	321483
GH-1840ZX with Acu-Rite 200S 2 Axis DRO & Collet Closer	321448
GH-1840ZX with Acu-Rite 200S 2 Axis DRO, Taper Attachment & Collet Closer	321454
GH-1840ZX with Acu-Rite 300S 2 Axis DRO	321415
GH-1840ZX with Acu-Rite 300S 2 Axis DRO & Taper Attachment	321418
GH-1840ZX with Acu-Rite 300S 2 Axis DRO & Collet Closer	321416
GH-1840ZX with Acu-Rite 300S 2 Axis DRO, Taper Attachment & Collet Closer	321417
GH-1840ZX with Newall DP700 2-Axis DRO	321650
GH-1840ZX with Newall DP700 2-Axis DRO & Collet Closer	321655
GH-1840ZX with Newall DP700 2-Axis DRO, Collet Closer & Taper Attachment	321657
GH-1860ZX LATHE AND ACCESSORY PACKAGES INSTALLED	
GH-1860ZX with Taper Attachment	321463
GH-1860ZX with Taper Attachment & Collet Closer	321961
GH-1860ZX with Acu-Rite 200S 2 Axis DRO	321484
GH-1860ZX with Acu-Rite 200S 2 Axis DRO & Taper Attachment	321504
GH-1860ZX with Acu-Rite 200S 2 Axis DRO & Collet Closer	321491
GH-1860ZX with Acu-Rite 200S 2 Axis DRO, Taper Attachment & Collet Closer	321505
GH-1860ZX with Acu-Rite 300S 2 Axis DRO	321590
GH-1860ZX with Acu-Rite 300S 2 Axis DRO & Taper Attachment	321591
GH-1860ZX with Acu-Rite 300S 2 Axis DRO & Collet Closer	321592
GH-1860ZX with Acu-Rite 300S 2 Axis DRO, Taper Attachment & Collet Closer	321593
GH-1860ZX with Newall DP700 2-Axis DRO	321485
GH-1860ZX with Newall DP700 2-Axis DRO & Taper Attachment	321452
GH-1860ZX with Newall DP700 2-Axis DRO, Collet Closer & Taper Attachment	321557

GH-1880ZX LATHE AND ACCESSORY PACKAGES INSTALLED	
GH-1880ZX with Taper Attachment	321486
GH-1880ZX with Taper Attachment & Collet Closer	322486
GH-1880ZX with Acu-Rite 200S 2 Axis DRO	321487
GH-1880ZX with Acu-Rite 200S 2 Axis DRO & Taper Attachment	321560
GH-1880ZX with Acu-Rite 200S 2 Axis DRO & Collet Closer	321492
GH-1880ZX with Acu-Rite 200S 2 Axis DRO, Taper Attachment & Collet Closer	321493
GH-1880ZX with Acu-Rite 300S 2 Axis DRO	321595
GH-1880ZX with Acu-Rite 300S 2 Axis DRO & Taper Attachment	321597
GH-1880ZX with Acu-Rite 300S 2 Axis DRO & Collet Closer	321598
GH-1880ZX with Acu-Rite 300S 2 Axis DRO, Taper Attachment & Collet Closer	321599
GH-1880ZX with Newall DP700 2-Axis DRO	321488
GH-1880ZX with Newall DP700 2-Axis DRO & Taper Attachment	321571
GH-2280ZX LATHE AND ACCESSORY PACKAGES INSTALLED	
GH-2280ZX with Taper Attachment	321565
GH-2280ZX with Collet Closer	321496
GH-2280ZX with Taper Attachment & Collet Closer	321575
GH-2280ZX with Acu-Rite 200S 2 Axis DRO	321879
GH-2280ZX with Acu-Rite 200S 2 Axis DRO & Taper Attachment	321567
GH-2280ZX with Acu-Rite 200S 2 Axis DRO & Collet Closer	321566
GH-2280ZX with Acu-Rite 200S 2 Axis DRO, Taper Attachment & Collet Closer	321568
GH-2280ZX with Acu-Rite 300S 2 Axis DRO	321610
GH-2280ZX with Acu-Rite 300S 2 Axis DRO & Taper Attachment	321612
GH-2280ZX with Acu-Rite 300S 2 Axis DRO & Collet Closer	321613
GH-2280ZX with Acu-Rite 300S 2 Axis DRO, Taper Attachment & Collet Closer	321615
GH-2280ZX with Newall DP700 2-Axis DRO	321880
GH-2280ZX with Newall DP700 2-Axis DRO & Taper Attachment	321881
GH-2280ZX with Newall DP700 2-Axis DRO, Collet Closer & Taper Attachment	321579

16" x 40" ZK GEARED HEAD ENGINE LATHE

This new JET GH1640-ZK lathe takes the best features of our ZX series manual lathes scaled down with a 2" Spindle Bore, which makes it perfect for Small Machine and Maintenance Shops or just about anywhere you might do turning.

The headstock gearbox is designed for quick setup of threading without any gear changes, all this is done with the dials on the front of the lathe.

Equipped with a one piece casting that allows for heavy cutting without any flexing.



FEATURES

- Chrome Molybdenum headstock gears are hardened and ground
- Universal Gearbox allows inch, metric, diametral and module pitch threads without changing gears
- High quality ANSI Class 50 wear-resistant bed ways are hardened and ground
- Removable Gap allows up to 23-5/8" diameter workpiece
- Attractive chrome-plated control levers, dials and knobs complete this impressive package
- D1-6 spindle is precisely ground for accuracy and supported by high quality spindle bearings
- Large easy to use foot brake

STANDARD EQUIPMENT

- 8" 3-Jaw Chuck with top reversing jaws
- 10" 4-Jaw Chuck
- 12" Face Plate
- Follow Rest & Steady Rest
- Fully integrated coolant system
- Full length splash guard
- Micro-carriage stops
- Carriage-mounted spindle control
- Removable Chip Tray in the front of stand
- 4-Way Tool Post
- Articulating halogen work lamp
- Mounting pads and levers

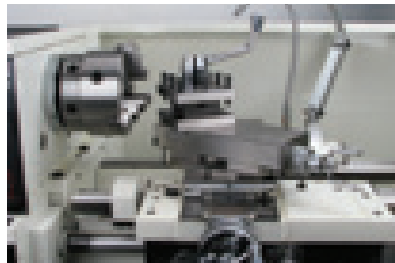
STOCK NUMBER	321850
Model Number	GH-1640ZK
Swing over Bed (in.)	16
Swing over Cross Slide (in.)	10
Swing Through Gap (in.)	23-5/8
Length of Gap (in.)	10-5/8
Distance between Centers (in.)	40
Hole Through Spindle (in.)	2
Spindle Mount	D1-6
Spindle Taper (w/ Sleeve)	MT-6 (MT-4)
Number of Spindle Speeds	12
Range of Spindle Speeds (RPM)	42-1,800
Number of Longitudinal and Cross Feed Rates	122
Range of Longitudinal Feeds (IPR)	.0015-.0913
Range of Cross Feeds (IPR)	.0006-.0365
Number of Inch Threads	61
Range of Inch Threads (TPI)	1-5/8-72 TPI
Number of Metric Threads	24
Range of Metric Threads	0.5 - 20
Max.Tool Size (in.)	1 x 1
Compound Slide Travel (in.)	5-1/8
Cross Slide Travel (in.)	10-13/16
Carriage Travel (in.)	36-3/8
Tailstock Spindle Travel (in.)	6
Taper in Tailstock Spindle	MT-4
Steady Rest Capacity (in.)	7/16 - 3-15/16
Follow Rest Capacity (in.)	1/2 - 3-1/8
Width of Bed (in.)	12-1/4
Overall Dimensions (in./ L x W x H)	91x42-1/8x49
Coolant Pump System	1/8HP, 3Ph
Motor:	2 Speed, 230/460V, 3Ph
High Speed	7-1/2HP
Low Speed	5HP
Prewired	230V
Net Weight (lbs)	3,877

ZK GEARED HEAD ENGINE LATHE AND ACCESSORY PACKAGES INSTALLED

GH-1640ZK Lathe with Taper Attachment	321852
GH-1640ZK Lathe with DP700 DRO & Taper Attachment	321851



6" 3-JAW DIRECT MOUNT SCROLL CHUCK



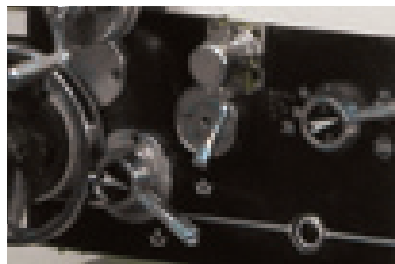
4-WAY TOOLPOST



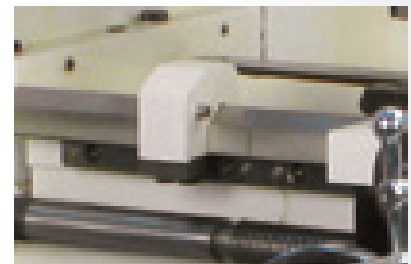
HEADSTOCK



THREADING DIAL



ADJUSTABLE FEED CLUTCH



MICRO-CARRIAGE STOP

13" x 40" AND 14" x 40" GEARED HEAD ENGINE LATHES

Unique JET exclusive design, this machine is considered by many a leader among Geared Head Engine Lathes. The features enable high-volume, precision use under even the strictest of specifications. The GH-1340W and 1440W embody versatility, accuracy, durability and efficiency.



FEATURES

- Hardened and ground gears are featured in the headstock and gearbox
- D1-4 spindle is precision ground for accuracy and supported by high-quality tapered roller bearings
- Splined, not keyed, shafts are utilized in the headstock
- Spindle actuation control is apron mounted
- Headstock is constantly oiled during operation
- V-way bed design is induction hardened and ground
- Gap bed section provided for larger diameter work
- Independent leadscrew and feed rod
- Inch-metric dials are standard
- Compound and cross slide have backlash adjustment
- Adjustable gibs are incorporated in the carriage and slideways
- Tailstock may be offset for turning tapers and includes an inch-metric graduated quill
- Tolerance test certificate included

STANDARD EQUIPMENT

- Micro-carriage bed stop
- Front removable chip tray
- Heavy-duty Stand
- 6" 3-jaw direct mount scroll chuck with top reversing jaws
- 8" 4-jaw independent chuck
- 12" face plate
- Four-way tool post
- Steady and follow rest
- Spindle jog button
- Foot brake
- Chuck Guard
- Coolant system with splash guard
- Metric change gears
- Halogen work lamp

STOCK NUMBER	321810/321820	321830/321840
Model Number	GH-1340W-1 GH-1340W-3	GH-1440W-1 GH-1440W-3
Swing over Bed (in.)	13	14
Swing over Cross Slide (in.)	7-1/4	8-1/4
Swing Through Gap (in.)	19	20
Length of Gap (in.)	9-3/8	9-3/8
Distance Between Centers (in.)	40	40
Spindle Bore (in.)	1-1/2	1-1/2
Spindle Mount	D1-4	D1-4
Spindle Taper (w/ Sleeve)	MT-5 (MT-3)	MT-5 (MT-3)
Number of Spindle Speeds	12	12
Range of Spindle Speeds (RPM)	40 - 1,800	40 - 1,800
Number of Longitudinal and Cross Feed Rates	40	40
Range of Longitudinal Feeds (IPR)	0.0011 - 0.0271	0.0011 - 0.0271
Range of Cross Feeds (IPR)	0.0003 - 0.0103	0.0003 - 0.0103
Number of Inch Threads	40	40
Range of Inch Threads (TPI)	4 - 112	4 - 112
Number of Metric Threads	22	22
Range of Metric Threads	0.45 - 7.5	0.45 - 7.5
Max Tool Size (in.)	5/8 x 5/8	5/8 x 5/8
Compound Slide Travel (in.)	3-1/2	3-1/2
Cross Slide Travel (in.)	6-3/8	6-3/8
Carriage Travel (in.)	37-1/2	37-1/2
Tailstock Spindle Travel (in.)	4-3/4	4-3/4
Taper in Tailstock Spindle	MT-3	MT-3
Steady Rest Capacity (in.)	3-1/2	3-1/2
Follow Rest Capacity (in.)	2-3/4	2-3/4
Width of Bed (in.)	10-1/4	10-1/4
Overall Dimensions (in./ L x W x H)	78 x 38 x 59	78 x 38 x 59
Motor: Stock Number 321810/321830	3HP, 1Ph, 230V	3HP, 1Ph, 230V
Motor: Stock Number 321820/321840	3HP, 3Ph, 230/460V Prewired 230V	3HP, 3Ph, 230V/460V Prewired 230V
Net Weight (lbs.)	2,081	2,191



321810



FRONT REMOVABLE CHIP TRAY



COMPOUND AND CROSS SLIDE HAVE BACKLASH ADJUSTMENT



EASY TO REACH EMERGENCY STOP

13" x 40" AND 14" x 40" GEARED HEAD ENGINE LATHES PACKAGES

JET will custom fit your Geared Head Engine Lathe with the combination of features and accessories best suited to meet the demands of your operation.

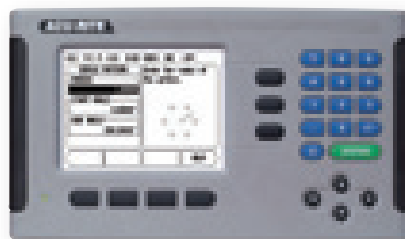
**CONTACT CUSTOMER SERVICE AT
888-804-7129 FOR ADDITIONAL
CUSTOMIZED PACKAGES**

GHB-1340W-1 LATHE AND ACCESSORY PACKAGES INSTALLED	
GH-1340W-1 with Taper Attachment	321521
GH-1340W-1 with Collet Closer	321151
GH-1340W-1 with Taper Attachment & Collet Closer	321160
GH-1340W-1 with Acu-Rite VUE 2 Axis DRO	321401
GH-1340W-1 with Acu-Rite VUE 2 Axis DRO & Taper Attachment	321425
GH-1340W-1 with Acu-Rite VUE 2 Axis DRO & Collet Closer	321146
GH-1340W-1 with Acu-Rite VUE 2 Axis DRO, Taper Attachment & Collet Closer	321126
GH-1340W-1 with Acu-Rite 200S 2 Axis DRO	321532
GH-1340W-1 with Acu-Rite 200S 2 Axis DRO & Taper Attachment	321128
GH-1340W-1 with Acu-Rite 200S 2 Axis DRO & Collet Closer	321526
GH-1340W-1 with Acu-Rite 200S 2 Axis DRO, Taper Attachment & Collet Closer	321538
GH-1340W-1 with Newall DP700 2-Axis DRO	321132
GH-1340W-1 with Newall DP700 2-Axis DRO & Taper Attachment	321154
GH-1340W-1 with Newall DP700 2-Axis DRO & Collet Closer	321142

GHB-1340W-3 LATHE AND ACCESSORY PACKAGES INSTALLED	
GH-1340W-3 with Taper Attachment	321516
GH-1340W-3 with Collet Closer	321555
GH-1340W-3 with Taper Attachment & Collet Closer	321577
GH-1340W-3 with Acu-Rite VUE 2 Axis DRO	321402
GH-1340W-3 with Acu-Rite VUE 2 Axis DRO & Taper Attachment	321172
GH-1340W-3 with Acu-Rite VUE 2 Axis DRO & Collet Closer	321170
GH-1340W-3 with Acu-Rite 200S 2 Axis DRO	321459
GH-1340W-3 with Acu-Rite 200S 2 Axis DRO & Taper Attachment	321447
GH-1340W-3 with Acu-Rite 200S 2 Axis DRO & Collet Closer	321562
GH-1340W-3 with Acu-Rite 200S 2 Axis DRO, Taper Attachment & Collet Closer	321546
GH-1340W-3 with Newall DP700 2-Axis DRO	321133
GH-1340W-3 with Newall DP700 2-Axis DRO & Taper Attachment	321143
GH-1340W-3 with Newall DP700 2-Axis DRO & Collet Closer	321537
GH-1340W-3 with Newall DP700 2-Axis DRO, Collet Closer & Taper Attachment	321547



NEWALL DP700 - DRO



ACU-RITE 200S - DRO



VUE ACU-RITE DRO



GH-1440W-1 LATHE AND ACCESSORY PACKAGES INSTALLED

GH-1440W-1 with Taper Attachment	321517
GH-1440W-1 with Collet Closer	321518
GH-1440W-1 with Taper Attachment & Collet Closer	321500
GH-1440W-1 with Acu-Rite VUE 2 Axis DRO	321403
GH-1440W-1 with Acu-Rite VUE 2 Axis DRO & Taper Attachment	321175
GH-1440W-1 with Acu-Rite VUE 2 Axis DRO & Collet Closer	321173
GH-1440W-1 with Acu-Rite 200S 2 Axis DRO	321549
GH-1440W-1 with Acu-Rite 200S 2 Axis DRO & Taper Attachment	321550
GH-1440W-1 with Acu-Rite 200S 2 Axis DRO & Collet Closer	321548
GH-1440W-1 with Acu-Rite 200S 2 Axis DRO, Taper Attachment & Collet Closer	321564
GH-1440W-1 with Newall DP700 2-Axis DRO	321134
GH-1440W-1 with Newall DP700 2-Axis DRO & Taper Attachment	321145
GH-1440W-1 with Newall DP700 2-Axis DRO & Collet Closer	321558

GH-1440W-3 LATHE AND ACCESSORY PACKAGES INSTALLED

GH-1440W-3 with Taper Attachment	321522
GH-1440W-3 with Collet Closer	321729
GH-1440W-3 with Acu-Rite VUE 2 Axis DRO	321404
GH-1440W-3 with Acu-Rite VUE 2 Axis DRO & Taper Attachment	321176
GH-1440W-3 with Acu-Rite VUE 2 Axis DRO & Collet Closer	321406
GH-1440W-3 with Acu-Rite 200S 2 Axis DRO	321533
GH-1440W-3 with Acu-Rite 200S 2 Axis DRO & Taper Attachment	321563
GH-1440W-3 with Acu-Rite 200S 2 Axis DRO & Collet Closer	321524
GH-1440W-3 with Acu-Rite 200S 2 Axis DRO, Taper Attachment & Collet Closer	321572
GH-1440W-3 with Newall DP700 2-Axis DRO	321135
GH-1440W-3 with Newall DP700 2-Axis DRO & Taper Attachment	321144
GH-1440W-3 with Newall DP700 2-Axis DRO & Collet Closer	320536



TAPER ATTACHMENT
321520



COLLET CLOSER
321519

13" x 40" GEARED HEAD BENCH LATHE

Yet another advancement in the field of Metal Turning led by JET. Designed for smooth, quiet operation and user versatility a JET Geared Head Bench Lathe cuts and tapers with exacting accuracy. JET Geared Head Bench Lathes feature extensive standard equipment packages that add to the ease of operation and production flexibility.

**CONTACT CUSTOMER SERVICE AT
888-804-7129 FOR ADDITIONAL
CUSTOMIZED PACKAGES**



FEATURES

- Enclosed gearbox design provides smooth, quiet operation
- Hardened and ground gears are featured in the headstock and gearbox
- V-way bed is induction hardened and ground
- Gap bed section provided for large diameter work
- Adjustable gibs are incorporated in the carriage and slideways
- Fast, easy speed changes
- D1-4 spindle is precision ground for accuracy and supported by high quality tapered roller bearings
- Headstock is constantly oiled during operation
- Gear box gives wide inch threading and feed capabilities with no gear changes
- Independent leadscrew and feed rod
- Spindle actuation control is apron mounted
- Compound and cross slide have backlash adjustment
- Tailstock may be offset for turning tapers and includes an inch/metric graduated quill

STANDARD EQUIPMENT

- Coolant tray
- Tolerance test certificate
- 6" 3-jaw direct mount scroll chuck with top reversing jaws
- 8" 4-jaw independent chuck
- 12" faceplate
- Four-way tool post
- Steady and follow rest
- Metric change gear
- Centers with headstock center sleeve
- Threading dial
- Tool box with tools
- Splash guard
- Micro Carriage Bed Stop

STOCK NUMBER	321357A	321359A
Model Number	GHB-1340A	GHB-1440A
Swing over Bed (in.)	13	14
Swing over Cross Slide (in.)	7-25/32	9-1/16
Swing Through Gap (in.)	18-3/4	20
Length of Gap (in.)	8	8
Distance Between Centers (in.)	43	43
Spindle Bore (in.)	1-3/8	1-3/8
Spindle Mount	D1-4	D1-4
Spindle Taper (w/ Sleeve)	MT-5 (MT-3)	MT-5 (MT-3)
Number of Spindle Speeds	8	8
Range of Spindle Speeds (RPM)	70 - 2,000	70 - 2,000
Number of Longitudinal and Cross Feed Rates	40	40
Range of Longitudinal Feeds (IPR)	0.0018 - 0.0374	0.0018 - 0.0374
Range of Cross Feeds (IPR)	0.0006 - 0.0130	0.0006 - 0.0130
Number of Inch Threads	38	38
Range of Inch Threads (TPI)	3-1/2 - 80	3-1/2 - 80
Number of Metric Threads	23	23
Range of Metric Threads	0.45 - 10	0.45 - 10
Max Tool Size (in.)	5/8 x 5/8	5/8 x 5/8
Compound Slide Travel (in.)	2-11/16	2-11/16
Cross Slide Travel (in.)	6-5/16	6-5/16
Carriage Travel (in.)	35	35
Tailstock Spindle Travel (in.)	3-3/4	3-3/4
Taper in Tailstock Spindle	MT-3	MT-3
Steady Rest Capacity (in.)	2-3/4	2-3/4
Follow Rest Capacity (in.)	2-3/8	2-3/8
Width of Bed (in.)	7-3/8	7-3/8
Overall Dimensions (in./ L x W x H)	79 x 28-1/2 x 30	79 x 28-1/2 x 30
Motor	2HP, 1Ph, 230V	2HP, 1Ph, 230V
Net Weight (lbs.)	1,154	1,211



GHB-1340A LATHE AND ACCESSORY PACKAGES INSTALLED

GHB-1340A with Acu-Rite VUE 2 Axis DRO & Collet Closer	321102
GHB-1340A with Taper Attachment	321119
GHB-1340A with Acu-Rite VUE 2 Axis DRO	321103
GHB-1340A with Taper Attachment & Collet Closer	321129
GHB-1340A with Newall DP700 2-Axis DRO, Collet Closer & Taper Attachment	321104
GHB-1340A with Newall DP700 2-Axis DRO & Taper Attachment	321115
GHB-1340A with Acu-Rite 200S 2 Axis DRO	321122
GHB-1340A with Acu-Rite 200S 2 Axis DRO & Taper Attachment	321123
GHB-1340A with Collet Closer	321124
GHB-1340A with Acu-Rite 200S 2 Axis DRO & Collet Closer	321125
GHB-1340A with Acu-Rite 200S 2-Axis DRO, Taper Attachment & Collet Closer	321127
GHB-1340A with Newall DP700 2-Axis DRO	321131
GHB-1340A with Acu-Rite VUE 2 Axis DRO, Taper Attachment & Collet Closer	321226
GHB-1340A with Newall DP700 2-Axis DRO & Collet Closer	321581
GHB-1340A Lathe with CBS-1340A Stand	321101AK
GHB-1340A Lathe with ACU-RITE VUE DRO & Stand	321103AK

GHB-1440A LATHE AND ACCESSORY PACKAGES INSTALLED

GHB-1440A with Acu-Rite VUE 2 Axis DRO & Collet Closer	321107
GHB-1440A with Taper Attachment	321157
GHB-1440A with Acu-Rite VUE 2 Axis DRO	321158
GHB-1440A with Taper Attachment & Collet Closer	321159
GHB-1440A with Acu-Rite 200s 2-Axis DRO & Taper Attachment	321161
GHB-1440A Bench Lathe with Stand	321156K

CALL FOR ADDITIONAL PACKAGES



ENCLOSED GEARBOX



COMPLETE WITH 4-WAY TOOL POST AND 3-JAW CHUCK MOUNTED FOR EASE OF USE

13" x 40" BELT DRIVE BENCH LATHE

The industry standard in Metal Turning, JET Belt Drive Bench Lathes come fully loaded and designed to accommodate a huge variety of optional accessories to perform a variety of operations, while increasing overall production. A JET Belt Drive Bench Lathe allows the operator to change between standard and metric gears quickly and easily to enhance productivity and efficiency, and create finely-shaped tapering with great precision.



SHOWN WITH OPTIONAL STAND



**CONTACT CUSTOMER SERVICE AT
888-804-7129 FOR ADDITIONAL
CUSTOMIZED PACKAGES**

FEATURES

- Enclosed gearbox design provides smooth, quiet operation
- Fast, easy speed changes
- Helical cut headstock gears reduce noise
- V-way bed is induction hardened and ground
- Gap bed section provided for large diameter work
- Low voltage motor controls
- Changes gears allow metric threading
- Spindle is supported by precision tapered roller bearings
- Independent leadscrew and feed rod
- T-slotted compound slide with four-way tool post
- Carriage mounted spindle control lever
- Automatic feeding and threading are fully interlocked
- Tailstock may be offset for turning tapers and includes an inch/metric graduated quill

STANDARD EQUIPMENT

- Coolant tray
- 6" 3-jaw direct mount scroll chuck with top reversing jaws
- 8" 4-jaw independent chuck
- 12" faceplate
- Four-way tool post
- Steady and follow rest
- Metric change gear
- Centers with headstock center sleeve
- Threading dial
- Micro Carriage Bed Stop
- Full Length Splash Guard
- Tolerance test certificate
- Tool box with tools

BDB-1340A LATHE AND ACCESSORY PACKAGES INSTALLED

BDB-1340A with Acu-Rite VUE 2-Axis DRO & Collet Closer	321108
BDB-1340A with Acu-Rite VUE 2 Axis DRO	321110
BDB-1340A with Collet Closer	321111
BDB-1340A with Taper Attachment & Collet Closer	321112
BDB-1340A with Acu-Rite 200S 2 Axis DRO	321121
BDB-1340A with Newall DP700 2-Axis DRO	321130
BDB-1340A with CBS-1340A Stand	321102AK
BDB-1340A with Taper Attachment	321120

STOCK NUMBER	321360A
Model Number	BDB-1340A
Swing over Bed (in.)	13
Swing over Cross Slide (in.)	7-25/32
Swing Through Gap (in.)	18-3/4
Length of Gap (in.)	8
Distance Between Centers (in.)	40
Spindle Bore (in.)	1-3/8
Spindle Mount	D1-4
Spindle Taper (w/ Sleeve)	MT-5 (MT-3)
Number of Spindle Speeds	12
Range of Spindle Speeds (RPM)	60 - 1,240
Number of Longitudinal and Cross Feed Rates	40
Range of Longitudinal Feeds (IPR)	.0018 - .0374
Range of Cross Feeds (IPR)	.0012 - .0345
Number of Inch Threads	40
Range of Inch Threads (TPI)	4-112
Number of Metric Threads	27
Range of Metric Threads	0.2-6
Max Tool Size (in.)	5/8 x 5/8
Compound Slide Travel (in.)	2-11/16
Cross Slide Travel (in.)	6-5/16
Carriage Travel (in.)	35
Tailstock Spindle Travel (in.)	3-3/4
Taper in Tailstock Spindle	MT-3
Steady Rest Capacity (in.)	2-5/8
Follow Rest Capacity (in.)	2-3/4
Width of Bed (in.)	7-3/8
Overall Dimensions (in./ L x W x H)	71 x 32 x 45 with Stand
Motor	2HP, 1Ph, 230V
Net Weight (lbs.)	1,175

9" x 20" BELT DRIVE BENCH LATHE

JET's BD-920W now comes complete with splash guard along with our enclosed gearbox and fully stocked with 2 chucks and centers make it shop ready.



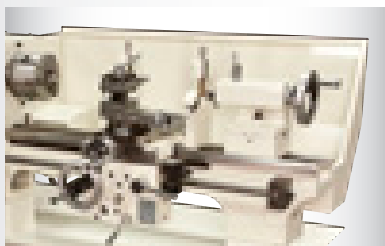
SHOWN WITH
OPTIONAL STAND

FEATURES

- Spindle supported by precision tapered roller bearings
- Hardened and ground bedways
- Reversing switch included for added versatility
- Backlash adjustments provided throughout the carriage
- Quick change gearbox provides wide range of inch and metric threads
- Power Longitudinal feed allows threading and reverse threading
- Standard 1-1/2 x 8 TPI spindle mount allows for many aftermarket accessories
- Tailstock is adjustable for taper cuts

STANDARD EQUIPMENT

- 4" 3-jaw chuck with threaded back plate
- 7" 4-jaw chuck with threaded back plate
- Metric Change gears
- Enclosed gear box
- Centers
- Threading dial
- Full length splash guard



*NEW FULL LENGTH SPLASH GUARD

STOCK NUMBER	321376
Model Number	BD-920W
Swing over Bed (in.)	9
Swing over Cross Slide (in.)	5-5/16
Distance Between Centers (in.)	20
Spindle Bore (in.)	7/8
Spindle Mount (TPI)	1/2 x 8
Spindle Taper w/ Sleeve	MT-3
Number of Spindle Speeds	6
Range of Spindle Speeds (RPM)	130 - 2,000
Number of Longitudinal Feed Rates	60
Range of Longitudinal Feeds (IPR)	.0006 - .037
Number of Inch Threads	30
Range of Inch Threads (TPI)	8 - 60
Number of Metric Threads	18
Range of Metric Threads	0.4 - 3.5
Max Tool Size (in.)	1/2 x 1/2
Compound Slide Travel (in.)	1-7/8
Cross Slide Travel (in.)	4-3/8
Carriage Travel (in.)	16
Tailstock Spindle Travel (in.)	1-9/16
Taper in Tailstock Spindle	MT-2
Steady Rest Capacity (in.)	1/4 - 1-7/8
Follow Rest Capacity (in.)	1/4 - 1-1/8
Width of Bed (in.)	4-1/2
Overall Dimensions (in./ L x W x H)	37 x 18-3/4 x 17-3/8
Motor	3/4HP, 1Ph, 115V Only
Net Weight (lbs.)	265

OPTIONAL EQUIPMENT	STOCK NUMBER
S-920N Stand for BD-920N	321374
Lathe with S-920N Stand	321155K

ACCESSORIES

Enhance shop operations and versatility with a wide range of quality accessories from JET.

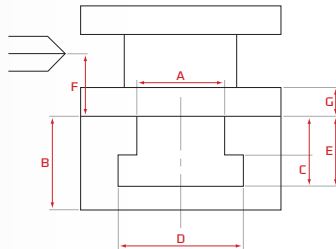


QUICK CHANGE TOOL POST SETS- WEDGE TYPE

FEATURES

- #1 Boring & Facing
- #2 Boring, Turning & Facing
- #4 Boring, Heavy-duty
- #7 Universal Parting Blade
- #10 Knurling, Facing & Turning
- Working parts hardened and ground
- Maximum rigidity for chatter-free performance
- Holders fit Aloris and YUASA tool posts
- Increases productivity of all lathe operations
- Completely sealed for maintenance free operation
- Change tools in seconds
- Base must be machined to fit your lathe. For JET Lathes see chart below for specifications.

DIMENSIONS FOR MACHINING YOUR TOOL POST TO FIT YOUR JET LATHE. DISTANCE FOR TOOL POST SIZE ON ALL JET METAL LATHES.



STOCK NUMBER	650295	650300	650305
Series	200 (BXA)	300 (CXA)	400 (CA)
Fits Swing Lathe Size (in.)	10 - 15	10 - 18	14 - 20
Net Weight (lbs.)	6	6	7



MODEL NO.	A	B	C	D	E	F	G
BDB1340A	1.26	1.378	0.315	2	0.63	1.417	0.787
GHB1340A	1.26	1.378	0.315	2	0.63	1.417	0.787
GH1340W	1.375	1.5	0.335	2	0.689	1.708	0.708
GH1440W	1.375	1.5	0.335	2	0.689	1.708	0.708
GH1440ZX, GH1460ZX	1.375	1.5	0.5	1.968	1.125	1.63	0.63
GH1640ZX, GH1660ZX	1.375	1.968	0.5	1.968	1.125	1.87	0.866
GH1840ZX, GH1860ZX, GH1880ZX	1.375	1.968	0.5	1.968	1.125	1.87	0.866
GH2280ZX	1.375	2.75	0.5	1.968	1.125	1.87	0.866

ALORIS SUPER-PRECISION INTRO-PRO SETS

Precision-engineered to ensure repetitive accuracy. Advanced design provides built-in quick tool changing, versatility with positive rigidity to meet the most exacting working tolerances. Quickly and easily installed on any engine lathe, bench or CNC lathe for a wide range of operations - from fine precision work to heavy-duty cutting.

The deluxe, affordable beginner's set built by the world's #1 quick change tool post manufacturer.

STOCK NUMBER	650295
650270	BXA Aloris Intro Set for 14" ZX Lathes
650275	CXA Aloris Intro Set for 16" ZX Lathes
650280	CA Aloris Intro Set for 18" ZX Lathes
650285	CA Aloris Intro Set for 22" ZX Lathes
650290	DA Aloris Intro Set for 26" ZH Lathes

INTRO-PRO SET

(Includes one each):

- Super Precision Tool Post
- #1 Tool Holder
- #2 Tool Holder

TURNING AND FACING HOLDER:

Takes various sizes of bits. Turning and facing tools can be locked in together. Saves time and labor when changing operations.

BORING, TURNING AND FACING HOLDER:

"V" groove holds round shank boring bars and tools as well as square tool bits.



TOOLING KITS FOR JET LATHES

660200 KIT INCLUDES:

- Three double ended boring bars
- Parting tool holder
- Adjustable turning tool holder
- Revolving knurling tool with three pairs of knurls
- Half dead center
- Carbide tipped dead center
- Heavy-duty live center
- Cut off tool
- Eight HSS tool bits
- Four hex key wrenches
- Works with 13" and 14" W Series and Bench Series Lathes



660200



660210 KIT INCLUDES:

- Three double ended boring bars
- Parting tool holder
- Adjustable turning tool holder
- Revolving knurling tool with three pairs of knurls
- Half dead center
- Carbide tipped dead center
- Heavy-duty live center
- Cut off tool
- Eight HSS tool bits
- Four hex key wrenches
- Works with all ZX Series Lathes



660210



NEW

660215 KIT INCLUDES:

- Quick Change Tool Post with 4 holders
- MT2 Live Centers
- 2pc Indexable Turning Tool Right & Left Hand
- Boring Tool
- HSS Internal Threading Tool
- Parting Tool holder w/HSS Blade
- HSS Parting Blade
- Works with the BD-920W lathe



660215



STOCK NUMBER	DESCRIPTION
660200	22-piece Turning Tool Kit for 13" & 14" W Series & Bench Series Lathes
660210	23-piece Turning Tool Kit for all ZX Series Lathes
660215	Tooling kit for BD-920W

ACCESSORIES

JET offers a complete line of accessories for all its machines.



5-C COLLET SETS & RACKS

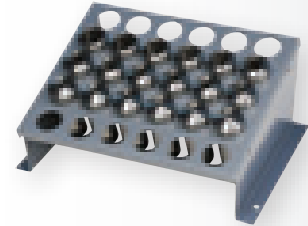
FEATURES

- Precision hardened and ground
- C Collets for use on lathes
- Premium collets with 0.0005mm T.I.R.

STOCK NO.	DESCRIPTION
650014	CS-5C 16 pcs 5-C collet set 1/8" to 1 1/16" by 1/16th
650015	18 pc Premium 5C collet set 1/16" to 1-1/8" by 16th with Metal Rack
650016	35 pc Premium 5C collet set 1/16" to 1-1/8" by 32nds with Metal Rack
650017	Metal collet rack holds 30 5C collets
650018	Metal collet rack holds 72 5C collets



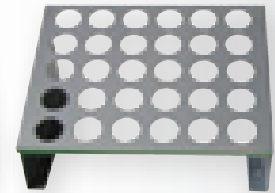
650014



650015



650016



650017

COOLANT SYSTEM

FEATURES

- For use with BDB-1340, GHB-1340 & GHB 1440
- 1/8 HP, 115V 3 gallon per minute flow rate
- Requires drilling of chip pan

STOCK NUMBER	DESCRIPTION
321444	CP-13BD, Coolant Pump Kit for 321357A and 321360A

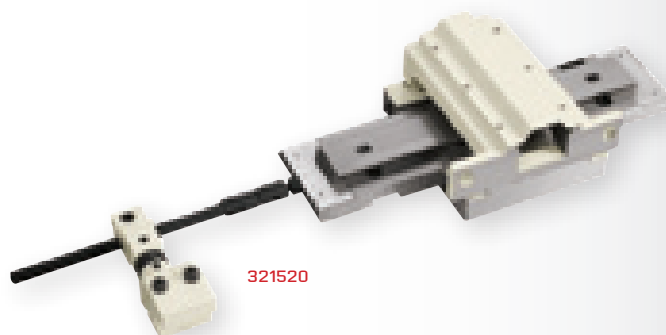


TAPER ATTACHMENTS

FEATURES

- Specially designed for each model
- 10° inclusive cutting capacity
- Mounts to predrilled and tapped holes
- Factory installation available

STOCK NUMBER	MODEL NUMBER	MAX. TAPER LENGTH (IN.) AT 10° ANGLE
321442	BDB-1340A	10
321442	GHB-1340A	10
321520	All W models	10-5/8
321291	All ZX models	18



COLLET CLOSER

FEATURES

- Specially designed for each model
- Precision ground components
- Uses 5C collets
- Rear mounted lever action
- Some drilling and other modification may be required

STOCK NUMBER	MODEL NUMBER
321515A	BDB-1340A
321514A	GHB-1340A
321519	All W models
321292	All ZX models

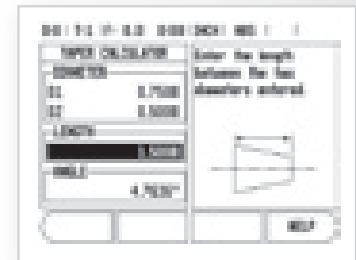


ACU-RITE AND NEWALL DRO SERIES FOR TURNING APPLICATIONS

The days of inaccurate measurement conversions due to math errors and productivity lulls caused by lost data are over. JET offers a variety of Digital Readout packages for JET Turning Machines designed to keep track of position, provide prompt feedback and messaging, and quick configuration of machine features. Die-cast metal construction ensures unit reliability and displays are very easy to read. Add the right Digital Readout unit to the JET Lathe in your shop.

VUE ACU-RITE DIGITAL READOUT

The Acu-Rite VUE is a cost-effective, entry-level solution for manual machine tool applications. With our innovative LCD display screen technology and versatile software to accommodate milling, turning or grinding applications the VUE is everything you need at a price you can afford.



COMMON FEATURES

- 1, 2 or 3 axis 5.7" Transmissive LCD display
- Help Function
- 16 Tool Offsets/Diameter
- Preset and zero reset

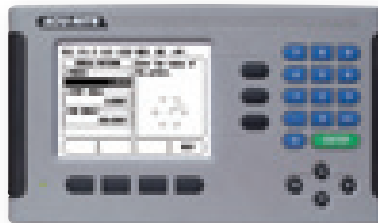
- 4 Function Calculator/Trig Calculator
- Instant Inch/mm conversion
- 200mm Fixed Reference Marks

TURNING SPECIFIC FEATURES

- Lock axis feature—used in conjunction with tool offsetting, lets you establish tool offsets with the tool under load, resulting in reduced tool deflection.
- Instant radius/diameter conversion

200S ACU-RITE DIGITAL READOUT

As the industry standard in digital readout systems, the Acu-Rite 200S offers state-of-the-art features for milling, turning and grinding applications.



COMMON FEATURES

- 2 or 3 axis 5.7" Transmissive LCD display
- Help Function
- 16 Tool Offsets/Diameter
- Preset and zero reset

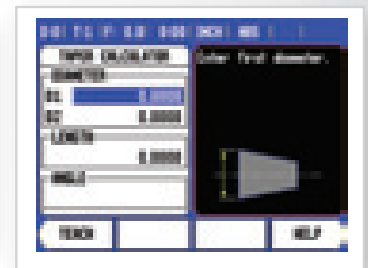
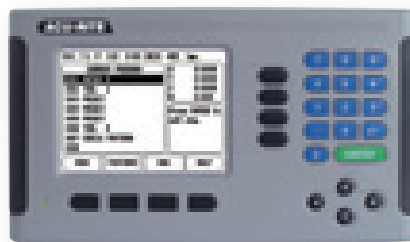
- 4 Function Calculator/Trig Calculator
- Instant Inch/mm conversion
- Position-Trac™ Home Reference

TURNING SPECIFIC FEATURES

- Lock axis feature
- Instant radius/diameter conversion
- Taper Calculator
- CSS (option)

300S ACU-RITE DIGITAL READOUT

The Acu-Rite 300S is a fully programmable 4 axis readout system, now available with a full color display. With the capability to store and create a library of programs the 300S is everything you need to create, edit and execute programs on your manual machine tool.



COMMON FEATURES

- 2, 3 or 4 axis 5.7" Full Color Display
- Multiple program names with numerous steps
- Multiple display views
- Job Clock
- Feed Rate Display
- Multiple Language Support
- Absolute/Incremental
- Near-Zero Warning
- Help Function
- 16 Tool Offsets/Diameter
- Preset and zero reset
- 4 Function Calculator/Trig Calculator
- Instant Inch/mm conversion
- Position-Trac™ Home Reference

TURNING SPECIFIC FEATURES

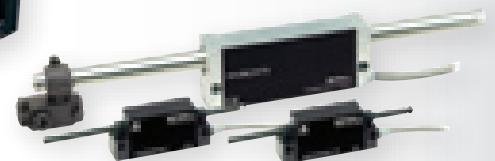
- Lock axis feature
- Instant radius/diameter conversion
- Taper Calculator

DP700 NEWALL DIGITAL READOUT

The DP700 is the latest in Newall's line of a powerful and intuitive DROs. The unit is housed in a rugged, ergonomically designed casting. The DRO features all of the essential functions for milling, boring, turning, grinding, and general machining operations.



NEWALL



COMMON FEATURES

- Clean, Crisp, Easy to Read, LEDs
- Intuitive Message Window
- Long Life Membrane Keypad
- Solid cast construction
- Safe, Low Voltage Power Supply (UL)
- Panel Mount Version Available
- Feed Rate Display
- Bolt Hole Circle Routine
- Line Hole Routine
- Arc Contouring
- Programmable Memory/Teach
- Polar Coordinates
- Line Hole Calculator
- Tool Offsets
- Taper Calculations
- Axis Vectoring/Summing
- Undo
- Linear and Segmented Error Comp.
- RS232 Output
- Languages: English, French, German, Spanish, Italian, Turkish, Czech, Russian, Portuguese, Danish

The DP700 is compatible with Newall's Spherosyn and Microsyn encoders which withstand the harshest shop conditions.

TURNING HELPFUL INFO

IN ADDITION TO MANUFACTURING PRECISION MACHINES,
JET STRIVES TO MAKE YOUR JOB EASIER WITH SOME
BASIC INFORMATION ABOUT ALL OUR TURNING PRODUCTS.



ENGINE LATHES

The size of an engine lathe is determined by the largest piece of stock that can be machined. Before machining a workpiece, the following measurements must be considered: the diameter of the work that will swing over the bed and the length between lathe centers.

Engine lathes all have the same general functional parts; the bed is the foundation of the working parts of the lathe. The main feature of its construction is the ways which are formed on its upper surface and run the full length of the bed. Ways provide the means for holding the tailstock and carriage, which slide along the ways, in alignment with the permanently attached headstock.

The headstock is located on the operator's left end of the lathe bed. It contains the main spindle and oil reservoir and the gearing mechanism for obtaining various spindle speeds and for transmitting power to the feeding and threading mechanism. The headstock is driven by an electric motor connected either to a belt, pulley or geared system. The spindle has a hole through its entire length to accommodate long workpieces.

The tailstock is located on the opposite end of the lathe from the headstock. It supports one end of the workpiece when machining between centers, supports long pieces held in the chuck, and holds various forms of cutting tools such as drills, reamers and taps.

The carriage includes the apron, saddle, compound rest, cross slide, tool post and the cutting tool. It sits across the ways and in front of the bed. The function of the carriage is to carry and move the cutting tool. It can be moved by hand or power and can be clamped into position with a locking nut. The saddle carries the cross slide and the compound rest. The cross slide is mounted on the ways on top of the saddle and is moved back and forth at 90 degrees to the axis of the lathe by the cross slide lead screw.

COMMON TERMINOLOGY OF A MANUAL LATHE

- A** GAP: THE GAP ALLOWS YOU TO TURN A LARGER DIAMETER WORK PIECE.
- B** SWING (EX: 14")
- C** DISTANCE BETWEEN CENTERS IS FROM CHUCK TO TAILSTOCK
- D** LENGTH OF BED



